

# power skirting: 4, 3, 2, or single compartment



CS 802 Single Compartment

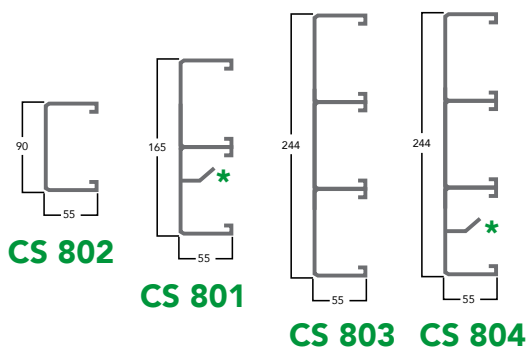


CS 801 Double Compartment



CS 803 & CS 804 Three & Four Compartment

## technical measurements



\* Divider available on request

Available in: Easter Oak, Hammertone Grey, Hospital Grey, Motorcraft Grey, Carrier Beige, Textured White, and Textured Black

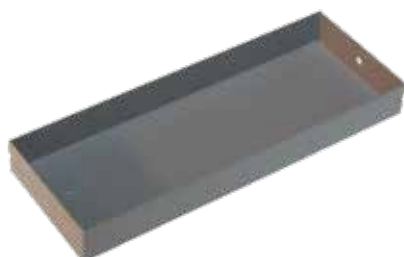


CSS 50 X 50 Cover

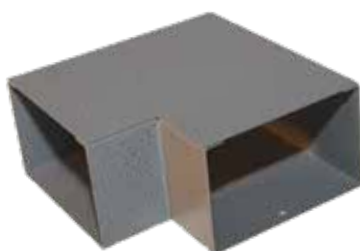


CSS 16 Amp Cover

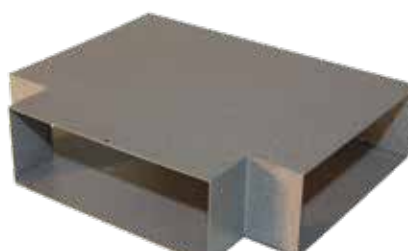
## power skirting accessories



End Cap



Flat Bend



Flat Tee



Horizontal Bend

# power skirting: eco skirt pvc

## eco/1 series with accessories

16A Outlet

universal twin outlets



Eco Skirt Single



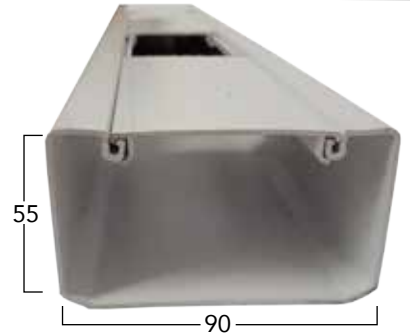
Cover



End Cap



Internal/External Bend



## eco/2 series with accessories



End Cap



Internal / External Bend



Internal/External Bend



3 compartment set-up



# power skirting: aluminium

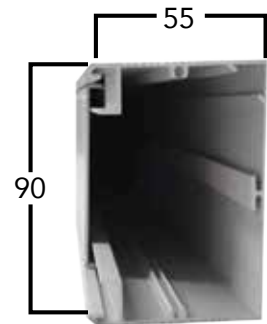
## single compartment



Single Compartment



Cover



## double compartment



Double Compartment with End Cap



Internal Elbow

